

ASRockInd Technical Reference - Q&A

Question	The network keeps disconnecting and reconnecting, what should I do?
Release date	2023/11/06
Product	All model
FAQ type	<input type="checkbox"/> Specification <input checked="" type="checkbox"/> OS & Driver <input checked="" type="checkbox"/> Application <input type="checkbox"/> BIOS/FW <input checked="" type="checkbox"/> Others

Answer:

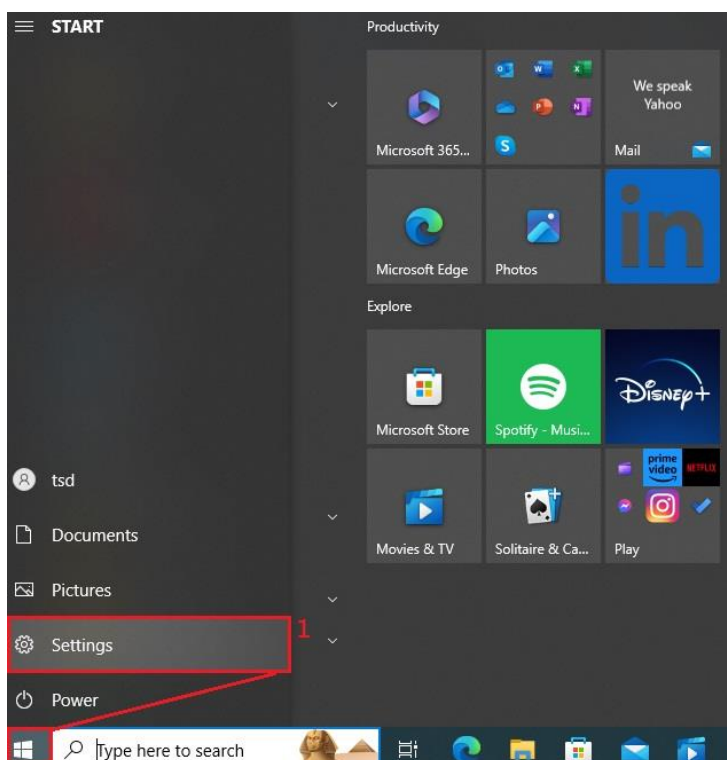
If you encounter the LAN keeps disconnecting and reconnecting symptom, it may relate to external software or applications.

Please refer the following suggestions to troubleshoot:

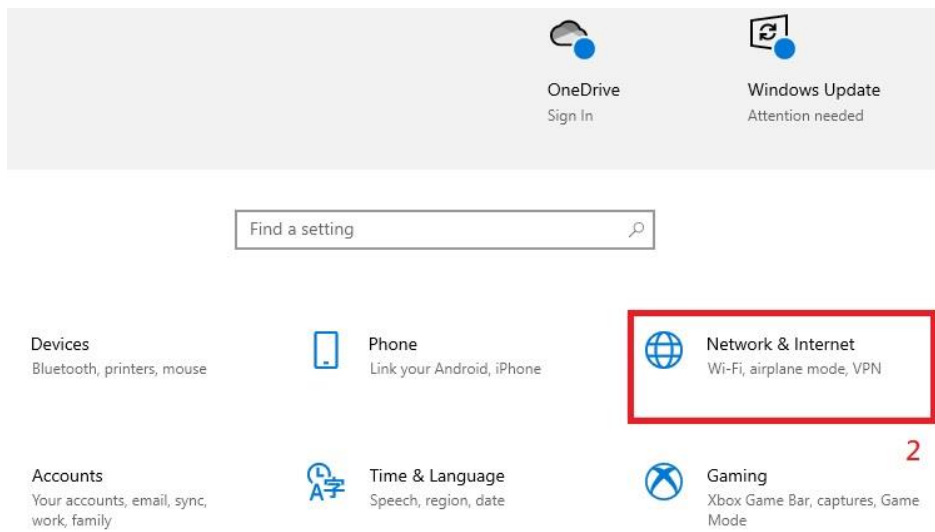
1. Check the Ethernet cable and connection.
2. Restart your modem, system and wireless router.
3. Reset network settings under windows environment.

LAN reset steps:

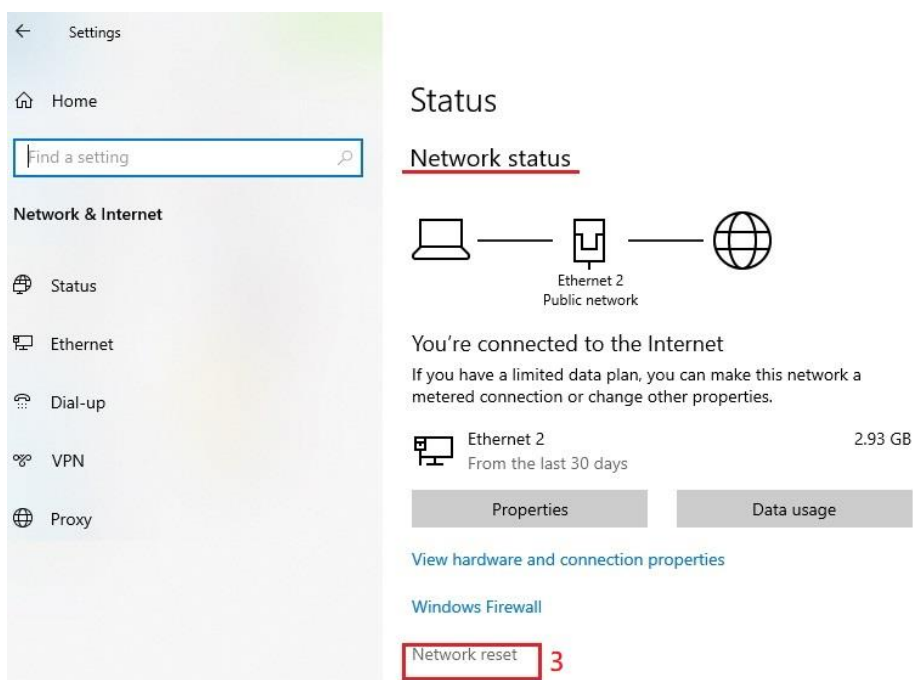
- (1) Press the Start button, then select Settings



(2) Press Network & Internet option



(3) Under Network status section, please select Network reset



(4) Click Reset now button and restart the Windows manually.

← Settings

Network reset

Network reset

This will remove then reinstall all your network adapters, and set other networking components back to their original settings. You might need to reinstall other networking software afterwards, such as VPN client software or virtual switches.

Your PC will be restarted.

Reset now

4